



CATALOGUE NO. 8635.0

EMBARGOED UNTIL 11.30 A.M. 21 SEPTEMBER 1994

TOURIST ACCOMMODATION, AUSTRALIA, JUNE QUARTER 1994

MAIN FEATURES

JUNE QUARTER 1994
COMPARED WITH
JUNE QUARTER 1993

HOTELS, MOTELS AND GUEST HOUSES

- Rooms available decreased slightly overall to 166,670 although Queensland, Western Australia, Tasmania and Northern Territory recorded small increases.
- Room nights occupied increased by 6.4 per cent to 8.2 million overall with increases in all States/Territories, including 14.7 per cent in Tasmania, 9.8 per cent in Western Australia and 8.0 per cent in Northern Territory.
- The room occupancy rate overall rose from 50.8 per cent to 54.1 per cent, with four star and five star rated establishments recording increases of 6.8 percentage points and 7.2 percentage points respectively.
- Guest nights increased by 6.2 per cent to 14.2 million and the bed occupancy rate increased from 30.7 per cent to 32.6 per cent.
- Guest arrivals increased by 6.1 per cent to 7.0 million while average length of stay remained at 2.0 days overall, ranging from 2.4 days for Western Australia to 1.8 days for New South Wales, Victoria and Tasmania. By star rating, average length of stay ranged from 2.6 days for five star to 1.7 days for two star establishments.
- Takings from accommodation increased by 10.2 per cent from \$611.9m to \$674.5m while average takings per room night occupied increased overall from \$79 to \$82, ranging from \$87 for Queensland to \$71 for South Australia.
- Employment (full-time and part-time) increased by 3.2 per cent from 98,491 persons to 101,655 persons.

HOLIDAY FLATS, UNITS AND HOUSES

- The number of units, etc. available for short-term letting increased by 4.6 per cent to 35,312 while unit nights occupied increased by 6.3 per cent to 1.45 million.
- The unit occupancy rate consequently increased from 44.3 per cent to 45.1 per cent.
- Unit lettings increased by 8.1 per cent to 0.28 million but average length of stay fell slightly from 5.3 days to 5.2 days.
- Accommodation takings increased by 12.3 per cent from \$75.5m to \$84.8m while average takings per unit night occupied increased from \$55 to \$59.

CARAVAN PARKS

- Capacity available increased by 0.3 per cent to 287,519 powered and unpowered sites and cabins, etc. of which 48,035 sites, etc. (16.7 per cent) were occupied by long-term residents, 44,085 sites (15.3 per cent) were permanently reserved but only casually occupied by their tenants and an average of 31,572 sites (11.0 per cent) were occupied by other short-term guests.
- Site nights occupied increased by 2.6 per cent to 11.3 million and the site occupancy rate rose from 42.1 per cent to 43.1 per cent.
- Takings from accommodation increased by 4.0 per cent from \$97.0m to \$100.9m at an average of \$9 per site night occupied.

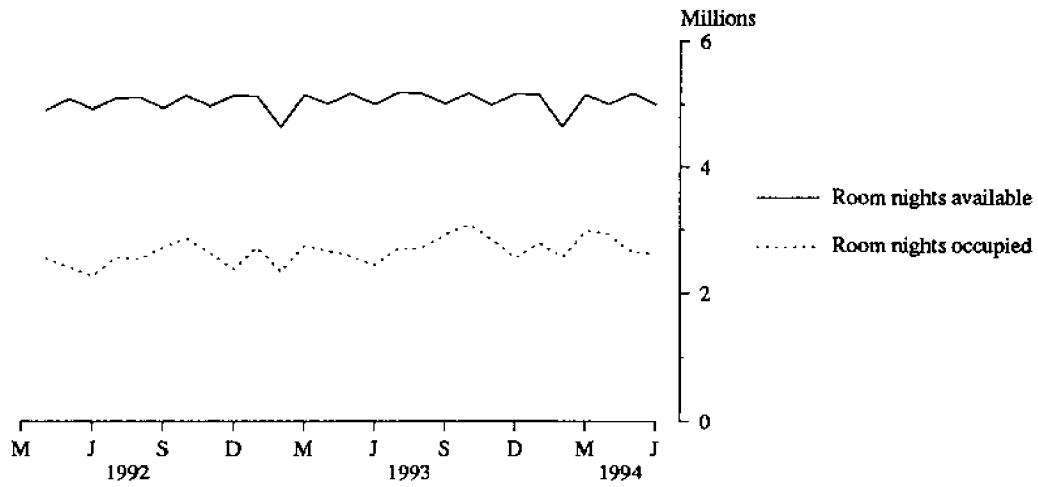
VISITOR HOSTELS

- Bed spaces available increased by 1.5 per cent from 24,680 to 25,061 and guest nights increased by 4.8 per cent to 0.92 million.
- The bed occupancy rate increased from 39.3 per cent to 40.6 per cent.
- Accommodation takings increased by 5.3 per cent to \$11.0m at an average of \$12 per guest night.

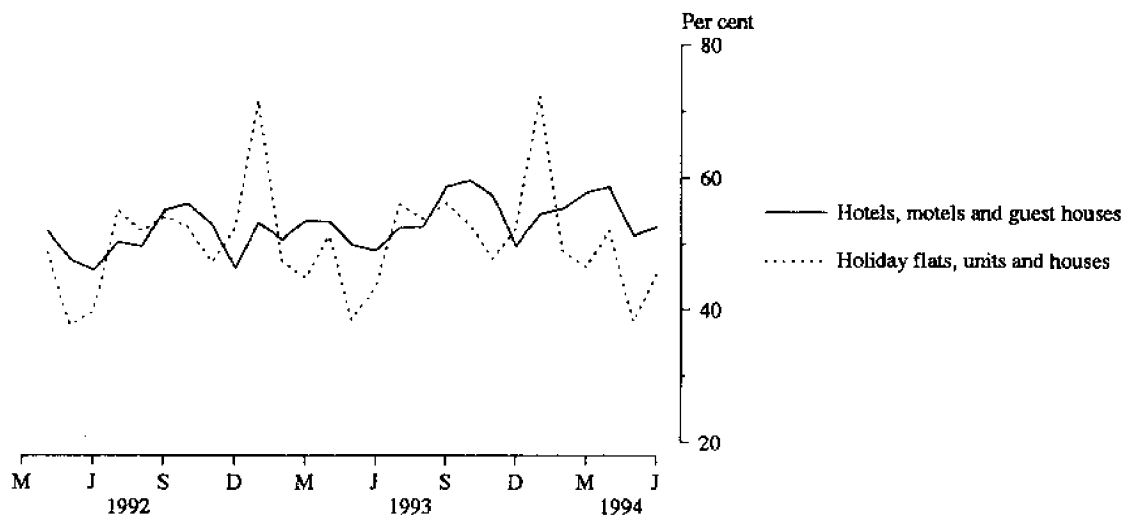
INQUIRIES

- *for further information about statistics in this publication and the availability of related unpublished statistics, contact John Alexander on Brisbane (07) 222 6215 or any ABS office.*
- *for information about other ABS statistics and services, refer to the back page of this publication.*

**MONTHLY ROOM NIGHTS AVAILABLE AND OCCUPIED:
HOTELS, MOTELS AND GUEST HOUSES,
AUSTRALIA**



**MONTHLY ROOM OCCUPANCY RATES,
AUSTRALIA**



**MONTHLY TAKINGS FROM ACCOMMODATION,
AUSTRALIA**

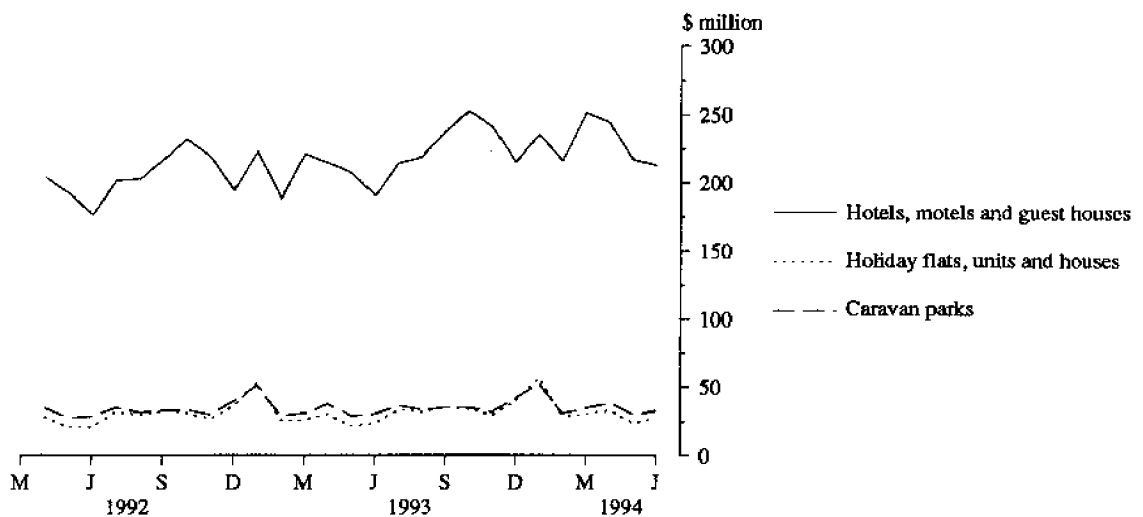


TABLE 1 — SUMMARY OF HOTELS, MOTELS AND GUEST HOUSES WITH FACILITIES, AUSTRALIA (a)

Particulars	Unit	Quarter ended				Year ended			
		March 1993	June 1993	September 1993	December 1993	March 1994	June 1994	June 1993	June 1994
LICENSED HOTELS WITH FACILITIES									
Establishments	No.	1,183	1,196	1,185	1,138	1,131	1,139
Guest rooms	No.	65,114	66,305	66,348	66,517	66,386	66,443
Bed spaces	No.	171,024	174,671	174,935	175,476	175,508	176,344
Employment (persons)	No.	62,846	62,104	64,208	65,735	65,257	64,744
Room nights occupied	'000	3,228.5	3,151.0	3,422.0	3,725.3	3,647.9	3,491.7	12,734.1	14,286.9
Room occupancy rate	per cent	55.4	52.3	56.1	61.0	61.1	57.7	53.7	59.0
Guest nights	'000	5,415.1	5,171.1	5,695.1	6,261.5	6,145.9	5,724.2	21,229.8	23,826.7
Bed occupancy rate	per cent	35.4	32.6	35.4	39.0	38.9	35.7	34.1	37.2
Guest arrivals	'000	2,258.3	2,197.1	2,447.5	2,715.2	2,673.6	2,454.6	9,073.3	10,291.0
Average length of stay	days	2.4	2.4	2.3	2.3	2.3	2.3	2.3	2.3
Takings from accommodation	\$'000	326,653	315,612	344,815	391,787	385,605	362,964	1,289,731	1,485,172
MOTELS AND GUEST HOUSES WITH FACILITIES									
Establishments	No.	3,709	3,750	3,739	3,694	3,684	3,700
Guest rooms	No.	101,081	100,701	100,670	100,226	99,876	100,227
Bed spaces	No.	304,537	304,225	304,200	302,890	302,063	303,246
Employment (persons)	No.	37,427	36,387	37,236	36,843	36,616	36,911
Room nights occupied	'000	4,598.8	4,555.6	4,938.5	4,777.8	4,707.0	4,705.3	18,535.7	19,128.6
Room occupancy rate	per cent	50.6	49.8	53.4	51.9	52.4	51.6	50.4	52.3
Guest nights	'000	8,615.9	8,206.1	9,036.9	8,755.5	8,815.4	8,485.2	34,017.2	35,093.0
Bed occupancy rate	per cent	31.5	29.7	32.3	31.5	32.5	30.8	30.6	31.8
Guest arrivals	'000	4,481.7	4,439.2	4,858.1	4,712.8	4,641.1	4,588.1	18,146.6	18,800.1
Average length of stay	days	1.9	1.8	1.9	1.9	1.9	1.8	1.9	1.9
Takings from accommodation	\$'000	305,827	296,315	327,348	317,754	318,309	311,549	1,220,561	1,274,960
TOTAL HOTELS, MOTELS AND GUEST HOUSES WITH FACILITIES									
Establishments	No.	4,892	4,946	4,924	4,832	4,815	4,839
Guest rooms	No.	166,195	167,006	167,018	166,743	166,262	166,670
Bed spaces	No.	475,561	478,896	479,135	478,366	477,571	479,590
Employment (persons)	No.	100,273	98,491	101,444	102,578	101,873	101,655
Room nights occupied	'000	7,827.3	7,706.6	8,360.5	8,503.1	8,355.0	8,196.9	31,269.8	33,415.5
Room occupancy rate	per cent	52.5	50.8	54.5	55.5	55.9	54.1	51.7	55.0
Guest nights	'000	14,031.0	13,377.2	14,732.0	15,017.0	14,961.3	14,209.4	55,247.1	58,919.7
Bed occupancy rate	per cent	32.9	30.7	33.5	34.2	34.8	32.6	31.9	33.8
Guest arrivals	'000	6,740.0	6,636.3	7,305.6	7,428.1	7,314.7	7,042.7	27,219.9	29,091.1
Average length of stay	days	2.1	2.0	2.0	2.0	2.0	2.0	2.0	2.0
Takings from accommodation	\$'000	632,480	611,927	672,163	709,542	703,914	674,513	2,510,291	2,760,132

(a) From December quarter 1993, establishments with fewer than 5 rooms have been formally excluded from the scope of this collection. See Explanatory Note 2 (page 20).

TABLE 2 — SUMMARY OF CARAVAN PARKS, AUSTRALIA

Particulars	Unit	Quarter ended				Year ended			
		March 1993	June 1993	September 1993	December 1993	March 1994	June 1994	June 1993	June 1994
SHORT-TERM CARAVAN PARKS									
Establishments	No.	1,547	1,552	1,609	1,621	1,621	1,627
Capacity									
On-site vans	No.	8,675	8,615	8,828	8,856	8,846	8,778
Other powered sites	No.	111,499	112,098	118,312	118,829	119,046	119,565
Unpowered sites	No.	52,087	51,814	52,310	52,415	51,861	51,258
Cabins, etc.	No.	8,359	8,549	8,669	8,834	8,966	9,080
<i>Total capacity</i>	<i>No.</i>	<i>180,620</i>	<i>181,076</i>	<i>188,119</i>	<i>188,934</i>	<i>188,719</i>	<i>188,681</i>
Sites occupied by long-term guests	No.	7,913	8,265	9,365	9,262	9,386	9,550
Other sites permanently reserved	No.	37,309	36,952	40,539	41,330	41,954	41,594
Employment (persons)	No.	5,526	5,427	5,563	5,867	5,813	5,704
Site nights occupied	'000	6,615.5	6,043.6	6,741.8	6,709.4	7,251.0	6,725.7	24,872.4	27,427.9
Site occupancy rate	per cent	40.7	36.7	39.0	38.8	42.7	39.3	37.5	39.9
Takings from accommodation	\$'000	62,977	49,384	55,807	61,678	69,484	53,625	219,076	240,593
LONG-TERM CARAVAN PARKS									
Establishments	No.	1,134	1,129	1,086	1,083	1,080	1,075
Capacity									
On-site vans	No.	12,253	12,202	12,070	12,103	12,221	12,096
Other powered sites	No.	70,051	69,838	64,695	64,271	63,932	63,685
Unpowered sites	No.	17,635	17,561	16,888	16,855	16,428	16,529
Cabins, etc.	No.	5,901	5,996	6,094	6,137	6,278	6,528
<i>Total capacity</i>	<i>No.</i>	<i>105,840</i>	<i>105,597</i>	<i>99,747</i>	<i>99,366</i>	<i>98,859</i>	<i>98,838</i>
Sites occupied by long-term guests	No.	40,007	39,660	38,687	38,065	38,205	38,485
Other sites permanently reserved	No.	5,721	5,575	2,255	2,474	2,511	2,491
Employment (persons)	No.	3,962	3,906	3,777	3,827	3,845	3,769
Site nights occupied	'000	4,909.2	4,925.7	4,700.6	4,486.9	4,449.1	4,530.3	19,841.2	18,166.9
Site occupancy rate	per cent	51.6	51.3	51.2	49.1	50.0	50.4	51.9	50.2
Takings from accommodation	\$'000	47,990	47,587	48,567	46,827	47,613	47,240	189,991	190,247
TOTAL CARAVAN PARKS									
Establishments	No.	2,681	2,681	2,695	2,704	2,701	2,702
Capacity									
On-site vans	No.	20,928	20,817	20,898	20,959	21,067	20,874
Other powered sites	No.	181,550	181,936	183,007	183,100	182,978	183,250
Unpowered sites	No.	69,722	69,375	69,198	69,270	68,289	67,787
Cabins, etc.	No.	14,260	14,545	14,763	14,971	15,244	15,608
<i>Total capacity</i>	<i>No.</i>	<i>286,460</i>	<i>286,673</i>	<i>287,866</i>	<i>288,300</i>	<i>287,578</i>	<i>287,519</i>
Sites occupied by long-term guests	No.	47,920	47,925	48,052	47,327	47,591	48,035
Other sites permanently reserved	No.	43,030	42,527	42,794	43,804	44,465	44,085
Employment (persons)	No.	9,488	9,333	9,340	9,694	9,658	9,473
Site nights occupied	'000	11,524.6	10,969.3	11,442.4	11,196.3	11,700.1	11,256.0	44,713.7	45,594.8
Site occupancy rate	per cent	44.7	42.1	43.2	42.4	45.2	43.1	42.8	43.5
Takings from accommodation	\$'000	110,967	96,971	104,374	108,504	117,097	100,865	409,067	430,840

TABLE 3 — SUMMARY OF HOLIDAY FLATS, UNITS AND HOUSES, AUSTRALIA

Particulars	Unit	Quarter ended				Year ended			
		March 1993	June 1993	September 1993	December 1993	March 1994	June 1994	June 1993	June 1994
Letting entities	No.	1,446	1,440	1,453	1,493	1,491	1,495
Flats, units and houses									
Single bedroom	No.	7,773	7,665	7,733	7,986	7,848	7,758
Multiple bedroom	No.	26,548	26,110	26,726	27,500	27,562	27,554
<i>Total flats, units and houses</i>	<i>No.</i>	<i>34,321</i>	<i>33,775</i>	<i>34,459</i>	<i>35,486</i>	<i>35,410</i>	<i>35,312</i>
Bed spaces	No.	148,464	146,251	148,721	154,103	154,325	153,381
Employment (persons) (a)	No.	4,855	4,788	4,868	5,155	5,221	5,206
Unit nights occupied	'000	1,690.3	1,362.1	1,750.8	1,663.6	1,781.8	1,447.6	6,280.5	6,643.7
Unit occupancy rate	per cent	54.8	44.3	55.3	51.1	56.1	45.1	50.9	51.9
Unit lettings	'000	290.4	256.4	293.2	312.9	314.6	277.1	1,108.7	1,197.8
Average length of stay	days	5.8	5.3	6.0	5.3	5.7	5.2	5.7	5.5
Takings from accommodation	\$'000	105,561	75,462	99,577	102,697	116,167	84,752	366,148	403,193

(a) Employment numbers exclude real estate agents and their employees.

TABLE 4 — SUMMARY OF VISITOR HOSTELS, AUSTRALIA

Particulars	Unit	Quarter ended				Year ended			
		March 1993	June 1993	September 1993	December 1993	March 1994	June 1994	June 1993	June 1994
Establishments	No.	404	397	410	414	426	417
Bed spaces	No.	24,943	24,680	24,681	24,960	25,748	25,061
Employment (persons)	No.	1,480	1,462	1,487	1,508	1,535	1,512
Guest nights	'000	1,000.2	881.8	994.9	989.3	1,042.9	924.4	3,853.7	3,951.5
Bed occupancy rate	per cent	44.8	39.3	43.9	43.2	45.3	40.6	42.7	43.3
Guest arrivals	'000	364.1	335.1	376.5	364.3	408.6	354.2	1,416.6	1,503.6
Average length of stay	days	2.7	2.6	2.6	2.7	2.6	2.6	2.7	2.6
Takings from accommodation	\$'000	11,497	10,479	11,511	11,694	12,560	11,031	44,780	46,796

TABLE 5 — HOTELS, MOTELS AND GUEST HOUSES WITH FACILITIES BY STAR GRADING (a)
NEW SOUTH WALES

Particulars	Licensed hotels with facilities	Motels and guest houses	Star grading					Ungraded	Total
			1	2	3	4	5		
ESTABLISHMENTS, CAPACITY AND EMPLOYMENT									
<i>June quarter 1993—</i>									
Establishments	284	1,479	39	573	738	121	20	272	1,763
Guest rooms	18,827	38,759	617	12,086	21,437	11,159	6,305	5,982	57,586
Bed spaces	47,362	118,356	1,633	36,822	64,569	32,050	13,839	16,805	165,718
Employment (persons)	15,787	14,258	309	4,467	8,200	7,537	6,111	3,421	30,045
<i>June quarter 1994—</i>									
Establishments	270	1,458	39	568	772	130	17	202	1,728
Guest rooms	18,569	38,443	532	11,771	22,498	12,359	5,291	4,561	57,012
Bed spaces	46,852	118,265	1,348	36,405	68,158	34,867	11,623	12,716	165,117
Employment (persons)	16,227	14,589	312	4,492	8,901	8,882	5,360	2,869	30,816
ROOM NIGHTS OCCUPIED ('000)									
<i>June quarter 1993</i>	879.8	1,744.3	23.6	478.2	1,003.8	587.9	325.0	205.6	2,624.1
<i>1994—</i>									
April	342.5	657.5	6.8	169.8	398.4	262.2	110.5	52.3	1,000.0
May	320.4	567.9	5.8	144.6	347.1	240.6	105.3	44.9	888.3
June	312.8	572.4	5.6	144.7	344.8	243.1	98.0	49.0	885.3
<i>June quarter 1994</i>	975.7	1,797.9	18.2	459.1	1,090.3	745.9	313.8	146.3	2,773.6
ROOM OCCUPANCY RATES (per cent)									
<i>June quarter 1993</i>	51.4	49.5	42.1	43.5	51.5	58.0	56.6	37.9	50.2
<i>1994—</i>									
April	61.5	57.0	42.4	48.1	59.1	70.7	69.6	38.2	58.5
May	55.7	47.7	35.3	39.6	49.8	62.8	64.2	31.9	50.3
June	56.2	49.7	35.3	41.0	51.1	65.6	61.8	35.8	51.8
<i>June quarter 1994</i>	57.7	51.4	37.6	42.9	53.3	66.3	65.2	35.3	53.5
GUEST NIGHTS ('000)									
<i>June quarter 1993</i>	1,390.8	3,162.3	38.8	862.7	1,820.4	969.0	528.7	333.5	4,553.1
<i>1994—</i>									
April	560.5	1,267.9	11.2	326.8	762.7	459.1	182.5	86.0	1,828.4
May	491.1	973.3	8.9	249.5	590.8	375.9	169.9	69.4	1,464.4
June	495.4	1,038.0	8.6	265.6	625.6	399.8	155.0	78.8	1,533.4
<i>June quarter 1994</i>	1,547.0	3,279.2	28.6	841.9	1,979.2	1,234.8	507.5	234.3	4,826.2
BED OCCUPANCY RATES (per cent)									
<i>June quarter 1993</i>	32.3	29.4	26.1	25.8	31.0	33.3	42.0	21.9	30.2
<i>1994—</i>									
April	39.9	35.8	27.6	29.9	37.3	43.9	52.3	22.6	36.9
May	33.8	26.6	21.2	22.1	28.0	34.8	47.2	17.7	28.6
June	35.2	29.3	21.2	24.3	30.6	38.2	44.5	20.7	31.0
<i>June quarter 1994</i>	36.3	30.5	23.3	25.4	31.9	38.9	48.0	20.3	32.1
GUEST ARRIVALS ('000)									
<i>June quarter 1993</i>	607.2	1,849.4	20.4	534.0	1,089.3	448.3	180.2	184.5	2,456.6
<i>1994—</i>									
April	250.3	723.3	5.6	198.6	446.7	206.1	73.4	43.1	973.5
May	230.4	574.1	4.4	157.6	354.5	179.3	72.4	36.3	804.5
June	229.8	613.7	4.5	168.0	377.5	185.3	67.4	40.7	843.5
<i>June quarter 1994</i>	710.5	1,911.1	14.5	524.2	1,178.7	570.7	213.2	120.2	2,621.5
AVERAGE LENGTH OF STAY (days)									
<i>June quarter 1993</i>	2.3	1.7	1.9	1.6	1.7	2.2	2.9	1.8	1.9
<i>June quarter 1994</i>	2.2	1.7	2.0	1.6	1.7	2.2	2.4	1.9	1.8
TAKINGS FROM ACCOMMODATION (\$'000)									
<i>June quarter 1993</i>	93,402	119,596	976	24,051	67,365	58,670	46,360	15,576	212,998
<i>1994—</i>									
April	37,900	46,998	289	8,767	27,824	27,010	17,097	3,911	84,898
May	35,328	39,145	243	7,085	23,286	24,337	16,100	3,423	74,473
June	33,854	40,236	228	7,374	23,628	25,102	14,083	3,675	74,091
<i>June quarter 1994</i>	107,082	126,379	760	23,226	74,738	76,449	47,279	11,009	233,461

(a) For footnote see end of table.

TABLE 5 — HOTELS, MOTELS AND GUEST HOUSES WITH FACILITIES BY STAR GRADING (a)—continued
VICTORIA

Particulars	Licensed hotels with facilities	Motels and guest houses	Star grading					Ungraded	Total
			1	2	3	4	5		
ESTABLISHMENTS, CAPACITY AND EMPLOYMENT									
<i>June quarter 1993—</i>									
Establishments	215	836	29	387	446	64	7	118	1,051
Guest rooms	9,815	20,463	294	7,166	12,128	6,033	2,413	2,244	30,278
Bed spaces	23,615	59,979	739	20,412	36,024	14,894	5,042	6,483	83,594
Employment (persons)	9,269	6,839	343	3,288	4,300	3,854	3,090	1,233	16,108
<i>June quarter 1994—</i>									
Establishments	194	824	23	391	457	72	8	67	1,018
Guest rooms	10,089	19,879	275	7,606	11,999	6,044	2,653	1,391	29,968
Bed spaces	24,577	58,006	719	21,569	35,576	15,084	5,522	4,113	82,583
Employment (persons)	9,553	6,388	280	3,438	4,262	3,947	3,193	821	15,941
ROOM NIGHTS OCCUPIED ('000)									
<i>June quarter 1993</i>	424.1	811.1	4.9	232.2	520.0	304.9	121.9	51.2	1,235.2
<i>1994—</i>									
April	180.7	311.3	1.8	100.0	203.0	121.4	53.3	12.6	492.1
May	162.7	258.5	1.5	75.5	170.9	116.3	46.3	10.8	421.3
June	158.7	238.0	1.3	70.4	156.0	112.6	45.5	10.8	396.7
<i>June quarter 1994</i>	502.2	807.8	4.5	246.0	529.9	350.3	145.2	34.1	1,310.0
ROOM OCCUPANCY RATES (per cent)									
<i>June quarter 1993</i>	47.5	43.6	18.4	35.7	47.2	55.5	55.5	25.1	44.9
<i>1994—</i>									
April	59.7	52.2	21.5	43.8	56.4	66.9	67.0	30.2	54.7
May	52.0	42.0	17.3	32.0	45.9	62.1	56.3	25.2	45.4
June	52.4	40.1	15.3	31.2	43.3	62.1	57.2	25.9	44.2
<i>June quarter 1994</i>	54.7	44.7	18.0	35.7	48.5	63.7	60.1	27.1	48.1
GUEST NIGHTS ('000)									
<i>June quarter 1993</i>	650.2	1,403.4	7.6	415.7	902.6	455.8	180.9	91.0	2,053.6
<i>1994—</i>									
April	291.0	577.9	2.8	187.6	379.0	196.0	80.0	23.6	868.8
May	238.6	426.9	2.2	125.9	279.1	174.9	64.2	19.2	665.5
June	240.3	400.7	1.8	121.6	264.0	168.4	64.6	20.6	641.0
<i>June quarter 1994</i>	769.8	1,405.5	6.8	435.1	922.0	539.3	208.8	63.4	2,175.3
BED OCCUPANCY RATES (per cent)									
<i>June quarter 1993</i>	30.3	25.7	11.3	22.5	27.6	33.6	39.4	15.4	27.0
<i>1994—</i>									
April	39.5	33.2	12.9	29.0	35.5	43.3	48.3	19.1	35.1
May	31.3	23.8	9.8	18.8	25.3	37.4	37.5	15.2	26.0
June	32.6	23.1	8.3	19.0	24.7	37.2	39.0	16.7	25.9
<i>June quarter 1994</i>	34.4	26.7	10.3	22.2	28.5	39.3	41.5	17.0	29.0
GUEST ARRIVALS ('000)									
<i>June quarter 1993</i>	318.5	813.0	4.9	248.4	532.0	222.0	85.5	38.6	1,131.5
<i>1994—</i>									
April	130.9	331.0	1.7	109.7	219.4	87.2	32.7	11.3	461.9
May	114.6	250.3	1.3	76.5	167.3	80.3	29.3	10.2	364.9
June	114.3	236.0	1.3	72.9	157.5	78.7	30.4	9.5	350.3
<i>June quarter 1994</i>	359.7	817.4	4.3	259.1	544.2	246.2	92.4	31.0	1,177.1
AVERAGE LENGTH OF STAY (days)									
<i>June quarter 1993</i>	2.0	1.7	1.5	1.7	1.7	2.1	2.1	2.4	1.8
<i>June quarter 1994</i>	2.1	1.7	1.6	1.7	1.7	2.2	2.3	2.0	1.8
TAKINGS FROM ACCOMMODATION (\$'000)									
<i>June quarter 1993</i>	47,190	54,567	154	11,628	34,713	33,718	18,382	3,162	101,757
<i>1994—</i>									
April	18,636	20,681	54	5,095	13,745	12,393	7,235	795	39,317
May	17,201	16,895	46	3,655	11,279	12,079	6,344	692	34,095
June	16,676	15,758	38	3,456	10,385	11,607	6,181	766	32,434
<i>June quarter 1994</i>	52,512	53,334	139	12,205	35,410	36,080	19,760	2,253	105,846

(a) For footnote see end of table.

TABLE 5 — HOTELS, MOTELS AND GUEST HOUSES WITH FACILITIES BY STAR GRADING (a)—continued
QUEENSLAND

Particulars	Licensed hotels with facilities	Motels and guest houses	Star grading					Ungraded	Total
			1	2	3	4	5		
ESTABLISHMENTS, CAPACITY AND EMPLOYMENT									
<i>June quarter 1993—</i>									
Establishments	279	842	22	459	391	53	18	178	1,121
Guest rooms	17,929	22,036	321	8,516	14,620	7,691	5,533	3,284	39,965
Bed spaces	53,158	68,245	957	25,386	45,012	24,352	15,999	9,697	121,403
Employment (persons)	18,835	8,288	148	3,695	7,213	5,592	8,151	2,324	27,123
<i>June quarter 1994—</i>									
Establishments	265	836	18	452	412	53	17	149	1,101
Guest rooms	18,028	22,183	285	8,550	16,066	7,538	5,286	2,486	40,211
Bed spaces	53,940	68,533	855	25,643	49,169	24,118	15,480	7,208	122,473
Employment (persons)	20,409	8,431	144	3,906	8,343	5,958	8,646	1,843	28,840
ROOM NIGHTS OCCUPIED ('000)									
<i>June quarter 1993</i>	941.8	1,134.1	10.0	386.3	777.5	428.4	334.0	139.7	2,075.9
<i>1994—</i>									
April	357.8	394.8	3.5	132.7	296.0	161.2	124.1	35.0	752.6
May	320.5	377.2	3.1	126.6	276.4	142.4	115.2	33.9	697.6
June	338.7	412.9	3.3	139.8	310.4	150.2	112.7	35.1	751.6
<i>June quarter 1994</i>	1,017.0	1,184.9	9.9	399.1	882.9	453.9	352.1	104.0	2,201.9
ROOM OCCUPANCY RATES (per cent)									
<i>June quarter 1993</i>	57.7	56.6	34.3	49.9	58.4	61.2	66.3	46.8	57.1
<i>1994—</i>									
April	66.2	59.3	40.8	51.7	61.4	71.3	78.3	47.0	62.4
May	57.3	54.8	35.0	47.8	55.5	61.0	70.3	44.0	56.0
June	62.6	62.1	40.3	54.5	64.4	66.4	71.1	47.1	62.3
<i>June quarter 1994</i>	62.0	58.7	38.6	51.3	60.4	66.2	73.2	46.0	60.2
GUEST NIGHTS ('000)									
<i>June quarter 1993</i>	1,697.0	2,102.2	18.2	708.4	1,423.7	800.1	590.5	258.4	3,799.3
<i>1994—</i>									
April	668.3	753.0	6.0	246.0	559.1	315.8	225.5	68.8	1,421.3
May	562.7	654.5	4.8	218.4	482.6	251.7	198.9	60.7	1,217.2
June	638.1	772.5	4.9	257.2	586.3	296.8	198.7	66.7	1,410.6
<i>June quarter 1994</i>	1,869.0	2,180.0	15.7	721.6	1,628.0	864.4	623.2	196.3	4,049.1
BED OCCUPANCY RATES (per cent)									
<i>June quarter 1993</i>	35.1	33.9	20.8	30.7	34.8	36.1	40.6	29.3	34.4
<i>1994—</i>									
April	41.3	36.6	23.4	32.0	37.9	43.6	48.6	31.8	38.7
May	33.6	30.8	18.1	27.5	31.7	33.7	41.5	27.2	32.1
June	39.4	37.6	20.2	33.5	39.7	41.0	42.8	30.8	38.4
<i>June quarter 1994</i>	38.1	35.0	20.5	30.9	36.4	39.4	44.2	29.9	36.3
GUEST ARRIVALS ('000)									
<i>June quarter 1993</i>	581.5	1,037.8	10.1	398.9	660.4	281.7	173.2	94.9	1,619.3
<i>1994—</i>									
April	236.0	366.9	3.2	136.2	249.4	122.9	67.5	23.7	603.0
May	206.3	321.3	2.6	121.6	216.5	101.1	63.4	22.4	527.6
June	222.1	380.0	2.8	143.2	262.1	108.1	61.8	24.0	602.1
<i>June quarter 1994</i>	664.5	1,068.2	8.6	401.0	728.0	332.2	192.8	70.1	1,732.7
AVERAGE LENGTH OF STAY (days)									
<i>June quarter 1993</i>	2.9	2.0	1.8	1.8	2.2	2.8	3.4	2.7	2.3
<i>June quarter 1994</i>	2.8	2.0	1.8	1.8	2.2	2.6	3.2	2.8	2.3
TAKINGS FROM ACCOMMODATION (\$'000)									
<i>June quarter 1993</i>	100,195	67,136	451	16,410	51,901	41,314	48,700	8,555	167,331
<i>1994—</i>									
April	43,321	24,679	228	6,244	21,705	17,412	20,318	2,092	68,000
May	36,956	22,922	134	5,717	19,056	14,871	18,196	1,905	59,878
June	37,402	25,196	138	6,444	21,823	15,509	16,731	1,954	62,598
<i>June quarter 1994</i>	117,679	72,797	499	18,405	62,583	47,792	55,245	5,951	190,476

(a) For footnote see end of table.

TABLE 5 — HOTELS, MOTELS AND GUEST HOUSES WITH FACILITIES BY STAR GRADING (a)—continued
SOUTH AUSTRALIA

Particulars	Licensed hotels with facilities	Motels and guest houses	Star grading					Ungraded	Total
			1	2	3	4	5		
ESTABLISHMENTS, CAPACITY AND EMPLOYMENT									
<i>June quarter 1993—</i>									
Establishments	121	239	17	152	137	16	3	35	360
Guest rooms	4,535	6,097	222	3,194	4,731	1,070	1,083	332	10,632
Bed spaces	11,024	18,609	453	8,937	13,837	3,362	2,166	878	29,633
Employment (persons)	4,988	2,319	241	2,119	2,447	942	976	582	7,307
<i>June quarter 1994—</i>									
Establishments	116	229	11	146	142	18	3	25	345
Guest rooms	4,420	6,177	138	3,114	4,797	1,186	1,081	281	10,597
Bed spaces	10,935	18,963	295	8,838	14,164	3,676	2,182	743	29,898
Employment (persons)	4,953	2,360	193	1,994	2,555	1,031	997	545	7,315
ROOM NIGHTS OCCUPIED ('000)									
<i>June quarter 1993</i>									
	183.2	263.5	3.8	107.4	215.4	57.5	52.8	9.8	446.6
<i>1994—</i>									
April	71.8	103.0	1.3	40.2	84.0	23.8	22.2	3.3	174.8
May	63.6	85.1	1.1	34.5	68.1	21.4	20.4	3.1	148.7
June	58.2	75.3	0.8	30.9	60.8	21.5	16.8	2.7	133.4
<i>June quarter 1994</i>	193.5	263.3	3.2	105.6	212.9	66.7	59.4	9.1	456.9
ROOM OCCUPANCY RATES (per cent)									
<i>June quarter 1993</i>									
	44.4	47.5	18.8	37.0	50.0	59.0	53.6	32.5	46.2
<i>1994—</i>									
April	54.1	55.6	30.8	43.0	58.3	66.9	68.5	39.1	55.0
May	46.4	44.4	26.2	35.8	45.8	58.2	60.8	35.6	45.3
June	43.9	40.6	20.1	33.0	42.2	60.4	51.8	32.3	42.0
<i>June quarter 1994</i>	48.1	46.9	25.7	37.3	48.8	61.8	60.4	35.7	47.4
GUEST NIGHTS ('000)									
<i>June quarter 1993</i>									
	279.8	463.2	5.6	187.1	368.2	93.1	73.9	15.1	743.1
<i>1994—</i>									
April	113.5	194.2	2.0	75.7	153.1	39.5	32.3	5.1	307.7
May	91.5	137.8	1.6	56.3	108.8	30.6	27.6	4.4	229.3
June	84.1	124.8	1.2	50.3	99.2	31.5	22.6	4.1	208.9
<i>June quarter 1994</i>	289.1	456.8	4.8	182.3	361.0	101.6	82.6	13.6	745.9
BED OCCUPANCY RATES (per cent)									
<i>June quarter 1993</i>									
	27.9	27.4	13.5	23.0	29.2	30.4	37.5	18.9	27.6
<i>1994—</i>									
April	34.6	34.1	22.2	28.5	36.0	35.8	49.4	22.9	34.3
May	27.0	23.4	18.0	20.6	24.8	26.8	40.8	19.1	24.7
June	25.6	21.9	13.4	19.0	23.3	28.6	34.6	18.4	23.3
<i>June quarter 1994</i>	29.0	26.5	17.8	22.7	28.0	30.4	41.6	20.1	27.4
GUEST ARRIVALS ('000)									
<i>June quarter 1993</i>									
	142.4	252.9	3.0	106.5	200.7	42.0	36.1	7.0	395.3
<i>1994—</i>									
April	50.8	107.8	0.9	42.7	83.4	15.3	13.6	2.6	158.6
May	43.8	82.3	0.6	33.2	64.6	12.9	12.4	2.3	126.1
June	42.6	75.8	0.6	30.4	60.0	14.0	11.4	2.1	118.5
<i>June quarter 1994</i>	137.2	265.9	2.2	106.4	208.1	42.2	37.4	7.0	403.2
AVERAGE LENGTH OF STAY (days)									
<i>June quarter 1993</i>									
	2.0	1.8	1.8	1.8	1.8	2.2	2.0	2.2	1.9
<i>June quarter 1994</i>									
	2.1	1.7	2.2	1.7	1.7	2.4	2.2	1.9	1.9
TAKINGS FROM ACCOMMODATION (\$'000)									
<i>June quarter 1993</i>									
	14,594	16,581	112	4,773	14,244	5,475	6,050	521	31,175
<i>1994—</i>									
April	6,115	6,593	35	1,887	5,566	2,409	2,693	117	12,708
May	5,337	5,209	39	1,486	4,371	2,065	2,477	108	10,547
June	4,616	4,676	22	1,300	3,911	2,013	1,952	95	9,292
<i>June quarter 1994</i>	16,068	16,478	95	4,673	13,847	6,488	7,122	321	32,547

(a) For footnote see end of table.

TABLE 5 — HOTELS, MOTELS AND GUEST HOUSES WITH FACILITIES BY STAR GRADING (a)—continued
WESTERN AUSTRALIA

Particulars	Licensed hotels with facilities	Motels and guest houses	Star grading					Ungraded	Total
			1	2	3	4	5		
ESTABLISHMENTS, CAPACITY AND EMPLOYMENT									
<i>June quarter 1993—</i>									
Establishments	162	166	10	125	108	9	8	68	328
Guest rooms	8,107	6,470	172	3,654	5,778	962	2,331	1,680	14,577
Bed spaces	19,650	17,971	372	9,245	15,742	2,724	5,571	3,967	37,621
Employment (persons)	6,681	2,341	156	1,617	2,794	1,098	2,368	989	9,022
<i>June quarter 1994—</i>									
Establishments	161	173	11	123	114	11	9	66	334
Guest rooms	8,185	6,569	180	3,451	6,169	893	2,424	1,637	14,754
Bed spaces	19,996	18,300	376	8,747	16,962	2,324	6,031	3,856	38,296
Employment (persons)	6,836	2,614	142	1,649	2,929	1,117	2,460	1,153	9,450
ROOM NIGHTS OCCUPIED ('000)									
<i>June quarter 1993</i>									
	375.6	292.0	4.4	136.4	282.5	60.5	130.2	53.6	667.6
<i>1994—</i>									
April	142.0	111.4	1.9	49.8	106.6	21.3	53.2	20.4	253.3
May	141.2	100.5	1.7	45.0	103.1	20.6	51.7	19.6	241.7
June	137.1	100.8	1.5	44.4	103.0	19.6	48.7	20.7	238.0
<i>June quarter 1994</i>	420.3	312.7	5.1	139.1	312.8	61.6	153.7	60.8	733.0
ROOM OCCUPANCY RATES (per cent)									
<i>June quarter 1993</i>									
	51.0	49.6	28.2	41.2	53.7	69.1	61.4	35.1	50.4
<i>1994—</i>									
April	57.8	56.7	35.7	48.1	57.6	79.6	73.2	42.1	57.3
May	55.6	49.5	29.6	42.1	53.9	74.5	68.8	39.1	52.9
June	55.9	51.3	27.3	42.9	55.7	73.3	67.0	42.6	53.8
<i>June quarter 1994</i>	56.4	52.5	30.9	44.3	55.7	75.8	69.7	41.3	54.7
GUEST NIGHTS ('000)									
<i>June quarter 1993</i>									
	582.6	516.8	6.8	222.8	484.3	98.6	198.3	88.7	1,099.4
<i>1994—</i>									
April	226.8	215.6	2.9	84.4	202.2	34.0	85.3	33.6	442.4
May	206.8	169.9	2.4	68.4	168.8	31.2	75.0	30.9	376.7
June	206.9	177.0	2.1	69.2	175.0	28.8	74.7	34.1	383.9
<i>June quarter 1994</i>	640.5	562.5	7.4	222.1	546.0	93.9	235.0	98.6	1,203.0
BED OCCUPANCY RATES (per cent)									
<i>June quarter 1993</i>									
	32.6	31.6	20.1	26.6	33.8	39.8	39.1	24.6	32.1
<i>1994—</i>									
April	37.8	39.3	26.1	32.2	39.7	48.7	47.2	29.2	38.5
May	33.4	30.0	20.3	25.3	32.1	43.3	40.1	26.0	31.8
June	34.5	32.3	18.6	26.4	34.4	41.3	41.3	29.6	33.4
<i>June quarter 1994</i>	35.2	33.8	21.6	27.9	35.4	44.4	42.8	28.2	34.5
GUEST ARRIVALS ('000)									
<i>June quarter 1993</i>									
	248.0	216.4	3.1	105.5	198.9	38.1	85.2	33.6	464.4
<i>1994—</i>									
April	92.0	88.5	1.4	41.1	77.9	12.3	35.1	12.7	180.5
May	87.4	71.7	1.0	33.3	68.4	11.9	33.7	10.8	159.1
June	89.5	74.4	1.0	33.6	70.6	11.1	35.7	11.9	163.9
<i>June quarter 1994</i>	268.9	234.6	3.4	108.0	216.9	35.3	104.5	35.5	503.4
AVERAGE LENGTH OF STAY (days)									
<i>June quarter 1993</i>									
	2.3	2.4	2.2	2.1	2.4	2.6	2.3	2.6	2.4
<i>June quarter 1994</i>									
	2.4	2.4	2.2	2.1	2.5	2.7	2.2	2.8	2.4
TAKINGS FROM ACCOMMODATION (\$'000)									
<i>June quarter 1993</i>									
	29,514	18,237	138	6,698	17,786	5,801	14,412	2,915	47,751
<i>1994—</i>									
April	12,062	7,384	58	2,530	7,331	2,205	6,202	1,120	19,446
May	11,669	6,527	46	2,223	6,669	2,120	5,880	1,257	18,196
June	11,101	6,222	46	2,268	6,621	2,007	5,349	1,031	17,323
<i>June quarter 1994</i>	34,832	20,134	150	7,022	20,621	6,333	17,432	3,409	54,966

(a) For footnote see end of table.

TABLE 5 — HOTELS, MOTELS AND GUEST HOUSES WITH FACILITIES BY STAR GRADING (a)—continued
TASMANIA

Particulars	Licensed hotels with facilities	Motels and guest houses	Star grading			Total
			1, 2 and Ungraded	3	4 and 5	
ESTABLISHMENTS, CAPACITY AND EMPLOYMENT						
<i>June quarter 1993—</i>						
Establishments	92	98	81	79	30	190
Guest rooms	3,421	1,837	1,303	2,483	1,472	5,258
Bed spaces	9,827	5,731	3,796	7,554	4,208	15,558
Employment (persons)	3,387	685	952	1,224	1,896	4,072
<i>June quarter 1994—</i>						
Establishments	91	86	73	82	22	177
Guest rooms	3,488	1,834	1,335	2,541	1,446	5,322
Bed spaces	9,961	5,617	3,774	7,710	4,094	15,578
Employment (persons)	3,468	751	904	1,324	1,991	4,219
ROOM NIGHTS OCCUPIED ('000)						
<i>June quarter 1993</i>	143.5	72.4	41.7	96.5	77.8	216.0
<i>1994—</i>						
April	62.4	35.2	20.2	47.0	30.4	97.6
May	58.6	28.5	15.8	39.2	32.1	87.1
June	42.8	20.3	11.9	28.1	23.1	63.1
<i>June quarter 1994</i>	163.8	83.9	47.8	114.3	85.6	247.7
ROOM OCCUPANCY RATES (per cent)						
<i>June quarter 1993</i>	46.1	43.4	35.2	42.7	58.1	45.1
<i>1994—</i>						
April	59.7	63.9	50.4	61.6	70.2	61.1
May	54.2	50.2	38.1	49.8	71.6	52.8
June	40.9	37.0	29.6	36.9	53.3	39.5
<i>June quarter 1994</i>	51.6	50.4	39.4	49.5	65.1	51.2
GUEST NIGHTS ('000)						
<i>June quarter 1993</i>	243.6	134.8	75.3	176.7	126.5	378.4
<i>1994—</i>						
April	107.0	67.5	38.5	88.2	47.8	174.5
May	87.9	48.8	27.1	65.9	43.7	136.7
June	68.9	36.2	21.7	50.3	33.1	105.1
<i>June quarter 1994</i>	263.8	152.4	87.3	204.3	124.6	416.2
BED OCCUPANCY RATES (per cent)						
<i>June quarter 1993</i>	27.2	25.9	21.8	25.7	33.0	26.7
<i>1994—</i>						
April	35.8	40.0	34.0	38.1	38.9	37.3
May	28.5	28.0	23.1	27.6	34.4	28.3
June	23.0	21.5	19.2	21.8	26.9	22.5
<i>June quarter 1994</i>	29.1	29.9	25.4	29.1	33.4	29.4
GUEST ARRIVALS ('000)						
<i>June quarter 1993</i>	125.4	75.4	45.3	100.9	54.6	200.8
<i>1994—</i>						
April	61.2	38.4	24.3	51.6	23.7	99.6
May	45.4	27.6	16.2	37.4	19.4	73.0
June	37.2	21.0	12.7	29.1	16.3	58.1
<i>June quarter 1994</i>	143.8	87.0	53.2	118.2	59.4	230.8
AVERAGE LENGTH OF STAY (days)						
<i>June quarter 1993</i>	1.9	1.8	1.7	1.8	2.3	1.9
<i>June quarter 1994</i>	1.8	1.8	1.6	1.7	2.1	1.8
TAKINGS FROM ACCOMMODATION (\$'000)						
<i>June quarter 1993</i>	10,811	4,361	2,249	5,729	7,195	15,172
<i>1994—</i>						
April	4,733	2,215	1,176	2,896	2,876	6,948
May	4,706	1,746	883	2,351	3,217	6,451
June	3,221	1,178	664	1,630	2,106	4,399
<i>June quarter 1994</i>	12,660	5,139	2,723	6,877	8,199	17,799

(a) For footnote see end of table.

TABLE 5 — HOTELS, MOTELS AND GUEST HOUSES WITH FACILITIES BY STAR GRADING (a)—continued
NORTHERN TERRITORY

Particulars	Licensed hotels with facilities	Motels and guest houses	Star grading					Ungraded	Total
			1	2	3	4 and 5			
ESTABLISHMENTS, CAPACITY AND EMPLOYMENT									
<i>June quarter 1993—</i>									
Establishments	30	60	13	33	24	5	15	90	
Guest rooms	2,006	3,159	358	1,348	2,047	987	425	5,165	
Bed spaces	5,764	9,352	1,055	3,882	6,244	2,767	1,168	15,116	
Employment (persons)	1,755	1,018	139	593	864	989	188	2,773	
<i>June quarter 1994—</i>									
Establishments	29	64	14	39	20	5	15	93	
Guest rooms	1,993	3,283	340	1,826	1,811	987	312	5,276	
Bed spaces	5,645	9,578	1,006	5,240	5,329	2,768	880	15,223	
Employment (persons)	1,881	1,175	188	748	893	1,062	165	3,056	
ROOM NIGHTS OCCUPIED ('000)									
<i>June quarter 1993</i>	106.2	148.0	15.7	62.1	112.8	51.1	12.5	254.2	
<i>1994—</i>									
April	34.4	50.4	4.1	25.5	34.1	17.1	3.9	84.8	
May	40.5	53.1	5.1	27.5	36.5	20.3	4.2	93.6	
June	38.5	57.7	5.9	30.2	37.0	18.2	5.0	96.3	
<i>June quarter 1994</i>	113.4	161.2	15.1	83.2	107.6	55.6	13.1	274.6	
ROOM OCCUPANCY RATES (per cent)									
<i>June quarter 1993</i>	58.2	51.5	48.1	50.7	60.5	56.9	32.4	54.1	
<i>1994—</i>									
April	57.5	51.1	40.6	46.6	62.7	57.9	41.6	53.6	
May	65.5	52.2	48.0	48.6	65.1	66.2	43.9	57.2	
June	64.4	58.6	57.8	55.1	68.1	61.5	53.2	60.8	
<i>June quarter 1994</i>	62.5	54.0	48.8	50.1	65.3	61.9	46.2	57.2	
GUEST NIGHTS ('000)									
<i>June quarter 1993</i>	174.9	265.1	30.7	107.1	201.9	79.0	21.4	440.0	
<i>1994—</i>									
April	55.9	90.1	7.6	44.0	61.8	26.4	6.3	146.1	
May	64.0	91.7	9.2	45.4	64.5	30.1	6.6	155.7	
June	63.0	103.3	10.9	53.1	65.4	28.6	8.3	166.3	
<i>June quarter 1994</i>	183.0	285.1	27.7	142.5	191.7	85.1	21.1	468.1	
BED OCCUPANCY RATES (per cent)									
<i>June quarter 1993</i>	33.3	31.1	31.9	30.3	35.5	31.4	20.1	32.0	
<i>1994—</i>									
April	33.0	31.4	25.1	28.0	38.6	31.8	23.7	32.0	
May	36.6	30.9	29.4	27.9	39.0	35.1	24.2	33.0	
June	37.2	35.9	36.1	33.8	40.9	34.4	31.3	36.4	
<i>June quarter 1994</i>	35.6	32.7	30.2	29.9	39.5	33.8	26.4	33.8	
GUEST ARRIVALS ('000)									
<i>June quarter 1993</i>	87.8	116.9	15.3	46.7	88.0	42.1	12.6	204.7	
<i>1994—</i>									
April	28.2	42.1	4.3	22.4	25.8	14.6	3.3	70.3	
May	30.0	42.9	5.2	22.5	26.3	15.6	3.2	72.9	
June	29.8	48.6	6.1	27.3	26.5	14.6	3.8	78.4	
<i>June quarter 1994</i>	88.0	133.6	15.6	72.2	78.6	44.8	10.3	221.5	
AVERAGE LENGTH OF STAY (days)									
<i>June quarter 1993</i>	2.0	2.3	2.0	2.3	2.3	1.9	1.7	2.1	
<i>June quarter 1994</i>	2.1	2.1	1.8	2.0	2.4	1.9	2.1	2.1	
TAKINGS FROM ACCOMMODATION (\$'000)									
<i>June quarter 1993</i>	10,091	9,760	718	3,540	9,030	5,688	875	19,851	
<i>1994—</i>									
April	3,512	3,299	214	1,451	2,903	2,024	219	6,811	
May	4,049	3,622	272	1,679	3,125	2,370	225	7,670	
June	3,761	3,952	335	1,844	3,177	2,090	266	7,712	
<i>June quarter 1994</i>	11,321	10,872	820	4,974	9,205	6,484	710	22,193	

(a) For footnote see end of table.

TABLE 5 — HOTELS, MOTELS AND GUEST HOUSES WITH FACILITIES BY STAR GRADING (a)—continued
AUSTRALIAN CAPITAL TERRITORY

Particulars	Licensed hotels with facilities	Motels and guest houses 1, 2 and Ungraded	Star grading		Total	
			3	4 and 5		
ESTABLISHMENTS, CAPACITY AND EMPLOYMENT						
<i>June quarter 1993—</i>						
Establishments	13	30	15	21	7	43
Guest rooms	1,665	1,880	774	1,601	1,170	3,545
Bed spaces	4,271	5,982	2,362	4,814	3,077	10,253
Employment (persons)	1,402	639	247	627	1,167	2,041
<i>June quarter 1994—</i>						
Establishments	13	30	14	21	8	43
Guest rooms	1,671	1,859	703	1,591	1,236	3,530
Bed spaces	4,438	5,984	2,217	4,783	3,422	10,422
Employment (persons)	1,415	603	237	643	1,138	2,018
ROOM NIGHTS OCCUPIED ('000)						
<i>June quarter 1993</i>	96.8	90.2	35.9	73.4	77.6	187.0
<i>1994—</i>						
April	37.6	35.2	12.9	30.2	29.7	72.8
May	37.5	30.0	11.6	25.9	30.0	67.4
June	30.7	28.2	11.1	22.3	25.6	58.9
<i>June quarter 1994</i>	105.8	93.4	35.6	78.4	85.3	199.2
ROOM OCCUPANCY RATES (per cent)						
<i>June quarter 1993</i>	63.9	52.7	51.0	50.4	72.9	58.0
<i>1994—</i>						
April	75.1	63.1	61.2	63.3	80.2	68.8
May	72.3	52.0	53.1	52.4	78.3	61.6
June	61.3	50.6	52.6	46.7	68.9	55.7
<i>June quarter 1994</i>	69.6	55.2	55.6	54.1	75.8	62.0
GUEST NIGHTS ('000)						
<i>June quarter 1993</i>	152.1	158.3	61.4	131.4	117.6	310.4
<i>1994—</i>						
April	62.1	68.7	25.1	57.3	48.4	130.8
May	53.3	46.8	17.9	40.3	41.9	100.1
June	46.8	48.0	19.3	37.4	38.1	94.8
<i>June quarter 1994</i>	162.1	163.5	62.4	134.9	128.3	325.6
BED OCCUPANCY RATES (per cent)						
<i>June quarter 1993</i>	39.1	29.1	28.6	30.0	42.0	33.3
<i>1994—</i>						
April	46.6	38.3	37.7	39.9	47.1	41.8
May	38.7	25.2	26.1	27.2	39.5	31.0
June	35.1	26.7	29.1	26.0	37.1	30.3
<i>June quarter 1994</i>	40.1	30.0	30.9	31.0	41.2	34.3
GUEST ARRIVALS ('000)						
<i>June quarter 1993</i>	86.4	77.4	27.1	66.9	69.7	163.8
<i>1994—</i>						
April	31.2	28.5	10.7	24.4	24.6	59.7
May	27.2	21.0	7.8	18.3	22.0	48.2
June	23.8	20.9	8.4	16.1	20.2	44.7
<i>June quarter 1994</i>	82.1	70.4	26.9	58.8	66.8	152.5
AVERAGE LENGTH OF STAY (days)						
<i>June quarter 1993</i>	1.8	2.0	2.3	2.0	1.7	1.9
<i>June quarter 1994</i>	2.0	2.3	2.3	2.3	1.9	2.1
TAKINGS FROM ACCOMMODATION (\$'000)						
<i>June quarter 1993</i>	9,816	6,077	2,022	5,790	8,081	15,893
<i>1994—</i>						
April	3,730	2,496	740	2,281	3,204	6,225
May	3,882	2,009	629	1,926	3,336	5,891
June	3,198	1,910	583	1,738	2,788	5,109
<i>June quarter 1994</i>	10,810	6,415	1,952	5,945	9,328	17,225

(a) For footnote see end of table.

TABLE 5 — HOTELS, MOTELS AND GUEST HOUSES WITH FACILITIES BY STAR GRADING (a)—continued
AUSTRALIA

Particulars	Licensed hotels with facilities	Motels and guest houses	Star grading					Ungraded	Total
			1	2	3	4	5		
ESTABLISHMENTS, CAPACITY AND EMPLOYMENT									
<i>June quarter 1993—</i>									
Establishments	1,196	3,750	132	1,791	1,944	301	60	718	4,946
Guest rooms	66,305	100,701	2,016	37,369	64,825	29,820	18,389	14,587	167,006
Bed spaces	174,671	304,225	5,293	108,477	193,796	85,633	44,418	41,279	478,896
Employment (persons)	62,104	36,387	1,370	16,529	27,669	22,306	21,465	9,152	98,491
<i>June quarter 1994—</i>									
Establishments	1,139	3,700	117	1,781	2,020	315	58	548	4,839
Guest rooms	66,443	100,227	1,763	37,800	67,472	30,965	17,459	11,211	166,670
Bed spaces	176,344	303,246	4,619	110,320	201,851	88,550	42,641	31,609	479,590
Employment (persons)	64,744	36,911	1,276	17,026	29,850	24,362	21,420	7,721	101,655
ROOM NIGHTS OCCUPIED ('000)									
<i>June quarter 1993</i>	3,151.0	4,555.6	63.5	1,455.6	3,081.9	1,604.6	1,005.0	496.0	7,706.6
<i>1994—</i>									
April	1,229.2	1,698.7	19.5	541.8	1,199.2	653.7	377.0	136.8	2,927.9
May	1,144.9	1,500.8	18.4	473.0	1,067.3	606.7	355.9	124.3	2,645.7
June	1,117.5	1,505.8	18.5	476.2	1,062.4	600.1	335.7	130.4	2,623.3
<i>June quarter 1994</i>	3,491.7	4,705.3	56.4	1,491.0	3,328.9	1,860.5	1,068.6	391.5	8,196.9
ROOM OCCUPANCY RATES (per cent)									
<i>June quarter 1993</i>	52.3	49.8	34.6	42.9	52.3	59.2	60.1	37.4	50.8
<i>1994—</i>									
April	61.7	56.5	36.9	47.8	59.3	70.4	72.0	40.7	58.6
May	55.6	48.3	33.7	40.4	51.0	63.2	65.8	36.0	51.2
June	56.1	50.1	35.1	42.1	52.5	64.6	64.1	38.8	52.5
<i>June quarter 1994</i>	57.7	51.6	35.2	43.4	54.2	66.0	67.3	38.5	54.1
GUEST NIGHTS ('000)									
<i>June quarter 1993</i>	5,171.1	8,206.1	109.5	2,590.7	5,509.2	2,679.9	1,632.0	855.9	13,377.2
<i>1994—</i>									
April	2,085.0	3,234.9	32.6	1,006.6	2,263.2	1,150.0	622.7	244.8	5,319.9
May	1,795.8	2,549.7	29.2	793.2	1,800.7	959.5	556.2	206.7	4,345.5
June	1,843.4	2,700.6	29.6	842.6	1,903.2	1,007.5	533.2	228.0	4,544.0
<i>June quarter 1994</i>	5,724.2	8,485.2	91.4	2,642.4	5,967.1	3,116.9	1,712.1	679.4	14,209.4
BED OCCUPANCY RATES (per cent)									
<i>June quarter 1993</i>	32.6	29.7	22.7	26.3	31.3	34.4	40.4	22.8	30.7
<i>1994—</i>									
April	39.4	35.6	23.6	30.4	37.4	43.3	48.7	25.8	37.0
May	32.8	27.1	20.4	23.2	28.8	35.0	42.1	21.2	29.2
June	34.8	29.7	21.6	25.5	31.4	37.9	41.7	24.1	31.6
<i>June quarter 1994</i>	35.7	30.8	21.8	26.3	32.5	38.7	44.1	23.7	32.6
GUEST ARRIVALS ('000)									
<i>June quarter 1993</i>	2,197.1	4,439.2	57.9	1,485.2	2,937.0	1,168.1	590.6	397.4	6,636.3
<i>1994—</i>									
April	880.5	1,726.5	17.1	574.3	1,178.6	497.7	231.2	108.1	2,607.0
May	785.1	1,391.2	15.3	460.3	953.4	431.1	222.6	93.7	2,176.3
June	789.1	1,470.4	16.4	488.5	999.5	438.3	216.7	100.1	2,259.5
<i>June quarter 1994</i>	2,454.6	4,588.1	48.8	1,523.0	3,131.4	1,367.2	670.4	301.9	7,042.7
AVERAGE LENGTH OF STAY (days)									
<i>June quarter 1993</i>	2.4	1.8	1.9	1.7	1.9	2.3	2.8	2.2	2.0
<i>June quarter 1994</i>	2.3	1.8	1.9	1.7	1.9	2.3	2.6	2.3	2.0
TAKINGS FROM ACCOMMODATION (\$'000)									
<i>June quarter 1993</i>	315,612	296,315	2,622	69,817	206,559	161,150	138,695	33,085	611,927
<i>1994—</i>									
April	130,007	114,345	880	27,208	84,251	67,870	55,210	8,933	244,352
May	119,128	98,074	782	22,784	72,063	62,268	51,126	8,180	217,202
June	113,829	99,129	811	23,463	72,912	61,602	45,917	8,253	212,958
<i>June quarter 1994</i>	362,964	311,549	2,474	73,454	229,226	191,740	152,253	25,366	674,513

(a) From December quarter 1993, establishments with fewer than 5 rooms have been formally excluded from the scope of this collection. See Explanatory Note 2 (page 20).

TABLE 6 — HOLIDAY FLATS, UNITS AND HOUSES BY STATE/TERRITORY, AUSTRALIA

Particulars	New South Wales	Victoria	Queensland	South Australia	Western Australia	Tasmania	Northern Territory	Australian Capital Territory	Australia
LETTING ENTITIES, CAPACITY AND EMPLOYMENT									
<i>June quarter 1993—</i>									
Letting entities	409	185	591	86	99	45	10	15	1,440
Flats, units and houses									
Single bedroom	1,937	964	3,371	370	511	227	150	135	7,665
Multiple bedroom	8,222	2,039	12,431	968	1,482	508	104	356	26,110
<i>Total flats, units and houses</i>	<i>10,159</i>	<i>3,003</i>	<i>15,802</i>	<i>1,338</i>	<i>1,993</i>	<i>735</i>	<i>254</i>	<i>491</i>	<i>33,775</i>
Bed spaces	47,378	13,236	63,683	6,621	9,245	3,247	1,020	1,821	146,251
Employment (persons) (a)	1,082	618	1,961	270	430	290	52	85	4,788
<i>June quarter 1994—</i>									
Letting entities	405	197	619	89	106	52	11	16	1,495
Flats, units and houses									
Single bedroom	1,912	971	3,423	317	569	260	167	139	7,758
Multiple bedroom	8,450	2,054	13,249	1,021	1,655	533	157	435	27,554
<i>Total flats, units and houses</i>	<i>10,362</i>	<i>3,025</i>	<i>16,672</i>	<i>1,338</i>	<i>2,224</i>	<i>793</i>	<i>324</i>	<i>574</i>	<i>35,312</i>
Bed spaces	48,315	13,151	67,723	6,757	10,501	3,486	1,267	2,181	153,381
Employment (persons) (a)	1,081	702	2,185	266	485	313	82	92	5,206
UNIT NIGHTS OCCUPIED ('000)									
<i>June quarter 1993</i>	<i>316.0</i>	<i>113.2</i>	<i>726.6</i>	<i>44.8</i>	<i>87.3</i>	<i>30.8</i>	<i>15.2</i>	<i>28.2</i>	<i>1,362.1</i>
<i>1994—</i>									
April	133.6	48.8	273.3	19.5	42.4	14.8	6.5	11.6	550.6
May	93.3	35.2	216.6	13.2	29.4	11.8	7.1	11.0	417.6
June	96.6	33.1	278.1	11.2	31.3	9.4	8.0	11.9	479.4
<i>June quarter 1994</i>	<i>323.4</i>	<i>117.2</i>	<i>768.0</i>	<i>43.8</i>	<i>103.1</i>	<i>35.9</i>	<i>21.6</i>	<i>34.6</i>	<i>1,447.6</i>
UNIT OCCUPANCY RATES (per cent)									
<i>June quarter 1993</i>	<i>34.2</i>	<i>41.4</i>	<i>50.5</i>	<i>36.8</i>	<i>48.3</i>	<i>46.1</i>	<i>65.9</i>	<i>63.0</i>	<i>44.3</i>
<i>1994—</i>									
April	43.0	53.8	54.8	48.9	63.6	62.3	66.9	67.8	52.0
May	29.1	37.6	42.0	31.8	42.6	47.8	71.1	62.2	38.2
June	31.1	36.4	55.6	27.8	47.0	39.3	81.9	69.1	45.3
<i>June quarter 1994</i>	<i>34.3</i>	<i>42.6</i>	<i>50.7</i>	<i>36.1</i>	<i>51.0</i>	<i>49.8</i>	<i>73.2</i>	<i>66.3</i>	<i>45.1</i>
UNIT LETTINGS ('000)									
<i>June quarter 1993</i>	<i>57.3</i>	<i>30.0</i>	<i>117.3</i>	<i>9.1</i>	<i>20.3</i>	<i>14.5</i>	<i>3.8</i>	<i>4.2</i>	<i>256.4</i>
<i>1994—</i>									
April	24.6	12.0	47.0	3.9	8.8	7.1	1.5	1.9	106.9
May	17.0	8.8	35.2	2.7	6.9	5.4	1.6	1.5	79.2
June	18.6	8.9	45.6	2.3	7.5	4.4	2.0	1.6	91.0
<i>June quarter 1994</i>	<i>60.3</i>	<i>29.7</i>	<i>127.8</i>	<i>9.0</i>	<i>23.3</i>	<i>16.9</i>	<i>5.1</i>	<i>5.0</i>	<i>277.1</i>
AVERAGE LENGTH OF STAY (days)									
<i>June quarter 1993</i>	<i>5.5</i>	<i>3.8</i>	<i>6.2</i>	<i>4.9</i>	<i>4.3</i>	<i>2.1</i>	<i>4.0</i>	<i>6.7</i>	<i>5.3</i>
<i>1994—</i>									
April	5.4	4.1	5.8	4.9	4.8	2.1	4.3	6.2	5.1
May	5.5	4.0	6.2	4.9	4.2	2.2	4.4	7.3	5.3
June	5.2	3.7	6.1	4.8	4.2	2.1	3.9	7.4	5.3
<i>June quarter 1994</i>	<i>5.4</i>	<i>3.9</i>	<i>6.0</i>	<i>4.9</i>	<i>4.4</i>	<i>2.1</i>	<i>4.2</i>	<i>6.9</i>	<i>5.2</i>
TAKINGS FROM ACCOMMODATION (\$'000)									
<i>June quarter 1993</i>	<i>16,451</i>	<i>8,184</i>	<i>38,248</i>	<i>2,359</i>	<i>4,836</i>	<i>1,992</i>	<i>1,162</i>	<i>2,230</i>	<i>75,462</i>
<i>1994—</i>									
April	7,447	3,604	15,865	1,019	2,728	1,046	475	938	33,123
May	4,779	2,698	11,943	692	1,700	786	562	870	24,030
June	5,197	2,707	14,993	602	1,855	623	700	921	27,598
<i>June quarter 1994</i>	<i>17,423</i>	<i>9,009</i>	<i>42,801</i>	<i>2,313</i>	<i>6,283</i>	<i>2,455</i>	<i>1,737</i>	<i>2,729</i>	<i>84,752</i>

(a) Employment numbers exclude real estate agents and their employees.

TABLE 7 — CARAVAN PARKS BY TYPE AND BY STATE/TERRITORY, AUSTRALIA

Particulars	New South Wales			Victoria			Queensland		
	Short-term	Long-term	Total	Short-term	Long-term	Total	Short-term	Long-term	Total
ESTABLISHMENTS, CAPACITY AND EMPLOYMENT									
<i>June quarter 1993—</i>									
Establishments	410	383	793	445	147	592	226	400	626
Capacity									
On-site vans	2,891	3,852	6,743	2,232	1,806	4,038	1,128	4,604	5,732
Other powered sites	36,768	26,160	62,928	36,529	8,127	44,656	10,636	21,866	32,502
Unpowered sites	14,526	6,089	20,615	13,349	1,781	15,130	8,478	5,386	13,864
Cabins, flats, etc.	2,649	1,944	4,593	2,241	770	3,011	1,158	2,230	3,388
<i>Total capacity</i>	<i>56,834</i>	<i>38,045</i>	<i>94,879</i>	<i>54,351</i>	<i>12,484</i>	<i>66,835</i>	<i>21,400</i>	<i>34,086</i>	<i>55,486</i>
Sites occupied by long-term guests	2,227	13,564	15,791	1,999	4,359	6,358	1,897	15,148	17,045
Other sites permanently reserved	18,564	3,828	22,392	14,002	436	14,438	611	630	1,241
Employment (persons)	1,626	1,350	2,976	1,351	435	1,786	777	1,412	2,189
<i>June quarter 1994—</i>									
Establishments	469	325	794	441	158	599	238	393	631
Capacity									
On-site vans	3,244	3,649	6,893	2,056	1,829	3,885	1,065	4,775	5,840
Other powered sites	42,593	20,644	63,237	36,475	8,568	45,043	11,040	21,305	32,345
Unpowered sites	14,999	4,788	19,787	13,172	2,155	15,327	8,268	5,109	13,377
Cabins, flats, etc.	2,916	1,936	4,852	2,268	1,107	3,375	1,266	2,331	3,597
<i>Total capacity</i>	<i>63,752</i>	<i>31,017</i>	<i>94,769</i>	<i>53,971</i>	<i>13,659</i>	<i>67,630</i>	<i>21,639</i>	<i>33,520</i>	<i>55,159</i>
Sites occupied by long-term guests	3,557	12,274	15,831	1,859	4,603	6,462	1,821	14,923	16,744
Other sites permanently reserved	21,892	1,334	23,226	14,518	367	14,885	755	456	1,211
Employment (persons)	1,795	1,179	2,974	1,328	484	1,812	866	1,380	2,246
SITE NIGHTS OCCUPIED ('000)									
<i>June quarter 1993</i>	<i>2,449.6</i>	<i>1,833.4</i>	<i>4,283.0</i>	<i>1,806.3</i>	<i>517.3</i>	<i>2,323.6</i>	<i>634.9</i>	<i>1,730.4</i>	<i>2,365.3</i>
<i>1994—</i>									
April	1,045.2	491.3	1,536.4	709.5	190.2	899.7	204.6	548.1	752.7
May	954.8	483.3	1,438.1	580.0	183.1	763.1	196.1	567.0	763.1
June	949.8	475.6	1,425.4	555.2	176.2	731.4	263.7	588.9	852.6
<i>June quarter 1994</i>	<i>2,949.8</i>	<i>1,450.1</i>	<i>4,399.9</i>	<i>1,844.7</i>	<i>549.6</i>	<i>2,394.3</i>	<i>664.3</i>	<i>1,704.1</i>	<i>2,368.4</i>
SITE OCCUPANCY RATES (per cent)									
<i>June quarter 1993</i>	<i>47.4</i>	<i>53.0</i>	<i>49.6</i>	<i>36.5</i>	<i>45.5</i>	<i>38.2</i>	<i>32.7</i>	<i>55.8</i>	<i>46.9</i>
<i>1994—</i>									
April	54.6	52.8	54.0	43.8	46.4	44.3	31.5	54.5	45.5
May	48.3	50.3	49.0	34.8	43.2	36.5	29.4	54.6	44.8
June	49.7	51.1	50.1	34.4	43.0	36.1	40.9	58.6	51.7
<i>June quarter 1994</i>	<i>50.8</i>	<i>51.4</i>	<i>51.0</i>	<i>37.6</i>	<i>44.2</i>	<i>39.0</i>	<i>33.9</i>	<i>55.9</i>	<i>47.3</i>
TAKINGS FROM ACCOMMODATION (\$'000)									
<i>June quarter 1993</i>	<i>18,693</i>	<i>17,291</i>	<i>35,984</i>	<i>10,038</i>	<i>5,203</i>	<i>15,241</i>	<i>7,485</i>	<i>16,235</i>	<i>23,720</i>
<i>1994—</i>									
April	8,955	5,402	14,357	5,165	2,034	7,199	2,437	5,307	7,744
May	6,106	4,996	11,102	2,514	1,853	4,367	2,301	5,326	7,627
June	6,392	5,162	11,555	2,589	1,827	4,416	3,232	6,022	9,254
<i>June quarter 1994</i>	<i>21,453</i>	<i>15,560</i>	<i>37,014</i>	<i>10,268</i>	<i>5,715</i>	<i>15,983</i>	<i>7,971</i>	<i>16,655</i>	<i>24,626</i>

TABLE 7 — CARAVAN PARKS BY TYPE AND BY STATE/TERRITORY, AUSTRALIA—continued

Particulars	South Australia			Western Australia			Tasmania		
	Short-term	Long-term	Total	Short-term	Long-term	Total	Short-term	Long-term	Total
ESTABLISHMENTS, CAPACITY AND EMPLOYMENT									
<i>June quarter 1993—</i>									
Establishments	170	41	211	187	119	306	57	10	67
Capacity									
On-site vans	935	242	1,177	1,058	1,209	2,267	277	105	382
Other powered sites	12,089	2,736	14,825	10,622	8,219	18,841	2,876	412	3,288
Unpowered sites	5,798	1,031	6,829	3,928	1,942	5,870	2,104	191	2,295
Cabins, flats, etc.	1,216	387	1,603	807	523	1,330	321	59	380
<i>Total capacity</i>	<i>20,038</i>	<i>4,396</i>	<i>24,434</i>	<i>16,415</i>	<i>11,893</i>	<i>28,308</i>	<i>5,578</i>	<i>767</i>	<i>6,345</i>
Sites occupied by long-term guests	632	1,366	1,998	1,058	3,823	4,881	241	136	377
Other sites permanently reserved	1,359	31	1,390	1,595	589	2,184	817	55	872
Employment (persons)	607	155	762	643	422	1,065	174	28	202
<i>June quarter 1994—</i>									
Establishments	167	44	211	198	113	311	58	12	70
Capacity									
On-site vans	902	244	1,146	1,166	1,082	2,248	284	117	401
Other powered sites	11,873	2,868	14,741	12,024	7,445	19,469	2,977	489	3,466
Unpowered sites	5,527	1,042	6,569	4,024	2,020	6,044	2,201	225	2,426
Cabins, flats, etc.	1,289	391	1,680	860	581	1,441	319	96	415
<i>Total capacity</i>	<i>19,591</i>	<i>4,545</i>	<i>24,136</i>	<i>18,074</i>	<i>11,128</i>	<i>29,202</i>	<i>5,781</i>	<i>927</i>	<i>6,708</i>
Sites occupied by long-term guests	616	1,368	1,984	1,269	3,900	5,169	229	178	407
Other sites permanently reserved	1,502	36	1,538	1,981	279	2,260	944	12	956
Employment (persons)	586	147	733	711	403	1,114	175	44	219
SITE NIGHTS OCCUPIED ('000)									
<i>June quarter 1993</i>	<i>415.1</i>	<i>161.9</i>	<i>577.1</i>	<i>468.0</i>	<i>499.6</i>	<i>967.5</i>	<i>141.7</i>	<i>22.8</i>	<i>164.5</i>
<i>1994—</i>									
April	179.0	56.0	235.1	198.9	159.5	358.4	57.1	9.2	66.3
May	134.0	52.0	186.0	166.1	156.6	322.7	46.6	8.1	54.7
June	116.3	50.4	166.7	178.7	156.4	335.1	43.5	7.3	50.8
<i>June quarter 1994</i>	<i>429.3</i>	<i>158.5</i>	<i>587.8</i>	<i>543.7</i>	<i>472.6</i>	<i>1,016.2</i>	<i>147.1</i>	<i>24.6</i>	<i>171.8</i>
SITE OCCUPANCY RATES (per cent)									
<i>June quarter 1993</i>	<i>22.8</i>	<i>40.5</i>	<i>26.0</i>	<i>31.3</i>	<i>46.2</i>	<i>37.6</i>	<i>27.9</i>	<i>32.7</i>	<i>28.5</i>
<i>1994—</i>									
April	30.5	41.1	32.5	36.7	47.8	40.9	32.9	33.1	32.9
May	22.3	36.9	25.1	29.6	45.4	35.7	26.0	28.1	26.3
June	20.0	37.0	23.3	32.9	46.9	38.2	25.1	26.4	25.2
<i>June quarter 1994</i>	<i>24.3</i>	<i>38.3</i>	<i>26.9</i>	<i>33.1</i>	<i>46.7</i>	<i>38.2</i>	<i>28.0</i>	<i>29.2</i>	<i>28.1</i>
TAKINGS FROM ACCOMMODATION (\$'000)									
<i>June quarter 1993</i>	<i>4,961</i>	<i>1,564</i>	<i>6,525</i>	<i>5,204</i>	<i>5,129</i>	<i>10,333</i>	<i>1,050</i>	<i>261</i>	<i>1,311</i>
<i>1994—</i>									
April	2,284	566	2,850	2,382	1,833	4,215	515	134	648
May	1,428	477	1,906	1,591	1,747	3,338	312	116	428
June	1,181	477	1,658	1,787	1,795	3,582	265	94	359
<i>June quarter 1994</i>	<i>4,893</i>	<i>1,521</i>	<i>6,414</i>	<i>5,760</i>	<i>5,375</i>	<i>11,135</i>	<i>1,091</i>	<i>344</i>	<i>1,435</i>

TABLE 7 — CARAVAN PARKS BY TYPE AND BY STATE/TERRITORY, AUSTRALIA—continued

Particulars	Northern Territory		Australian Capital Territory		Australia		
	Short-term	Long-term	Total	Total	Short-term	Long-term	Total
ESTABLISHMENTS, CAPACITY AND EMPLOYMENT							
<i>June quarter 1993—</i>							
Establishments	57	24	81	5	1,552	1,129	2,681
Capacity							
On-site vans	94	233	327	151	8,615	12,202	20,817
Other powered sites	2,578	1,824	4,402	494	112,098	69,838	181,936
Unpowered sites	3,631	722	4,353	419	51,814	17,561	69,375
Cabins, flats, etc.	157	73	230	10	8,549	5,996	14,545
<i>Total capacity</i>	<i>6,460</i>	<i>2,852</i>	<i>9,312</i>	<i>1,074</i>	<i>181,076</i>	<i>105,597</i>	<i>286,673</i>
Sites occupied by long-term guests	211	947	1,158	317	8,265	39,660	47,925
Other sites permanently reserved	4	6	10	—	36,952	5,575	42,527
Employment (persons)	249	80	329	24	5,427	3,906	9,333
<i>June quarter 1994—</i>							
Establishments	56	25	81	5	1,627	1,075	2,702
Capacity							
On-site vans	61	249	310	151	8,778	12,096	20,874
Other powered sites	2,583	1,872	4,455	494	119,565	63,685	183,250
Unpowered sites	3,067	771	3,838	419	51,258	16,529	67,787
Cabins, flats, etc.	162	76	238	10	9,080	6,528	15,608
<i>Total capacity</i>	<i>5,873</i>	<i>2,968</i>	<i>8,841</i>	<i>1,074</i>	<i>188,681</i>	<i>98,838</i>	<i>287,519</i>
Sites occupied by long-term guests	199	922	1,121	317	9,550	38,485	48,035
Other sites permanently reserved	2	7	9	—	41,594	2,491	44,085
Employment (persons)	243	92	335	40	5,704	3,769	9,473
SITE NIGHTS OCCUPIED ('000)							
<i>June quarter 1993</i>	<i>128.0</i>	<i>121.6</i>	<i>249.6</i>	<i>38.7</i>	<i>6,043.6</i>	<i>4,925.7</i>	<i>10,969.3</i>
<i>1994—</i>							
April	34.7	37.5	72.2	14.3	2,428.9	1,506.2	3,935.1
May	46.1	43.6	89.7	13.9	2,123.8	1,507.6	3,631.3
June	65.9	48.3	114.2	13.3	2,173.0	1,516.5	3,689.5
<i>June quarter 1994</i>	<i>146.7</i>	<i>129.4</i>	<i>276.1</i>	<i>41.5</i>	<i>6,725.7</i>	<i>4,530.3</i>	<i>11,256.0</i>
SITE OCCUPANCY RATES (per cent)							
June quarter 1993	22.1	46.9	29.8	39.6	36.7	51.3	42.1
<i>1994—</i>							
April	19.8	42.1	27.3	44.3	42.9	50.8	45.6
May	25.4	47.4	32.8	41.7	36.4	49.2	40.8
June	37.4	54.3	43.1	41.4	38.5	51.1	42.9
June quarter 1994	27.5	47.9	34.4	42.5	39.3	50.4	43.1
TAKINGS FROM ACCOMMODATION (\$'000)							
<i>June quarter 1993</i>	<i>1,953</i>	<i>1,209</i>	<i>3,162</i>	<i>695</i>	<i>49,384</i>	<i>47,587</i>	<i>96,971</i>
<i>1994—</i>							
April	531	387	918	289	22,269	15,952	38,221
May	680	458	1,138	199	14,933	15,172	30,105
June	977	540	1,517	198	16,422	16,116	32,539
<i>June quarter 1994</i>	<i>2,188</i>	<i>1,385</i>	<i>3,573</i>	<i>686</i>	<i>53,625</i>	<i>47,240</i>	<i>100,865</i>

TABLE 8 — VISITOR HOSTELS BY STATE/TERRITORY, AUSTRALIA

Particulars	New South Wales (a)	Victoria	Queensland	South Australia	Western Australia	Tasmania	Northern Territory	Australia
ESTABLISHMENTS, CAPACITY AND EMPLOYMENT								
<i>June quarter 1993—</i>								
Establishments	76	40	115	40	51	39	36	397
Bed spaces	4,917	2,509	7,548	1,955	3,112	1,475	3,164	24,680
Employment (persons)	277	137	505	125	143	94	181	1,462
<i>June quarter 1994—</i>								
Establishments	77	49	116	46	57	36	36	417
Bed spaces	4,979	2,797	7,822	2,118	3,119	1,450	2,776	25,061
Employment (persons)	280	145	543	136	150	90	168	1,512
GUEST NIGHTS ('000)								
<i>June quarter 1993</i>	196.7	68.9	329.3	44.9	91.3	14.7	136.1	881.8
<i>1994—</i>								
April	74.7	32.5	112.9	21.4	37.5	8.6	40.7	328.1
May	66.5	24.1	111.4	16.1	32.5	3.9	42.0	296.4
June	64.6	21.2	117.1	14.3	32.1	2.6	47.9	299.9
<i>June quarter 1994</i>	205.7	77.7	341.4	51.7	102.1	15.1	130.6	924.4
BED OCCUPANCY RATES (per cent)								
<i>June quarter 1993</i>	44.1	30.2	47.9	25.3	32.2	10.9	47.3	39.3
<i>1994—</i>								
April	50.0	38.7	48.1	33.9	40.1	19.7	49.2	43.7
May	43.1	27.8	45.9	24.8	33.6	8.7	49.3	38.2
June	43.3	25.2	49.9	22.7	34.4	6.0	58.2	40.0
<i>June quarter 1994</i>	45.4	30.5	48.0	27.1	36.0	11.5	52.2	40.6
GUEST ARRIVALS ('000)								
<i>June quarter 1993</i>	60.6	27.1	123.5	22.6	29.3	10.4	61.5	335.1
<i>1994—</i>								
April	21.9	13.6	43.5	11.5	12.3	5.1	20.6	128.6
May	18.8	10.2	39.5	8.2	10.3	2.6	21.5	111.0
June	18.9	8.9	42.8	8.0	9.7	1.7	24.5	114.6
<i>June quarter 1994</i>	59.6	32.7	125.9	27.7	32.3	9.4	66.6	354.2
AVERAGE LENGTH OF STAY (days)								
<i>June quarter 1993</i>	3.2	2.5	2.7	2.0	3.1	1.4	2.2	2.6
<i>1994—</i>								
April	3.4	2.4	2.6	1.9	3.0	1.7	2.0	2.6
May	3.5	2.4	2.8	2.0	3.1	1.5	2.0	2.7
June	3.4	2.4	2.7	1.8	3.3	1.5	2.0	2.6
<i>June quarter 1994</i>	3.5	2.4	2.7	1.9	3.2	1.6	2.0	2.6
TAKINGS FROM ACCOMMODATION (\$'000)								
<i>June quarter 1993</i>	2,525	894	3,787	471	1,031	166	1,605	10,479
<i>1994—</i>								
April	1,066	417	1,283	202	404	97	523	3,993
May	857	291	1,247	150	357	47	539	3,488
June	813	288	1,336	130	353	31	600	3,550
<i>June quarter 1994</i>	2,736	995	3,866	482	1,115	175	1,662	11,031

(a) Including Australian Capital Territory establishments.

EXPLANATORY NOTES

INTRODUCTION

1 This publication contains data, for Australia and each State and Territory, from a quarterly survey of tourist accommodation establishments. The period covered by the latest survey is the 3 months ended 30 June 1994.

SCOPE

2 Tourist accommodation establishments currently included in the survey comprise two groups:

- Establishments which provide predominantly short-term accommodation (i.e. for periods of less than 2 months) to the general public. These include:

Hotels, motels and guest houses, with facilities being hotels licensed to operate a public bar and motels, private hotels and guest houses all of which provide a bath (or shower) and toilet in most guest rooms and have breakfast available for guests.

NOTE: From December quarter 1993, hotel, motel and guest house establishments with fewer than five rooms have been formally excluded from the scope of this statistical collection. This change in scope resulted in the exclusion of 95 establishments which in the September quarter 1993 Survey aggregates for Australia represented 1.9 per cent of hotel, motel and guest house establishments but accounted for only 0.2 per cent of accommodation capacity and less than 0.1 per cent of occupancy and takings.

Holiday flats, units and houses (excluding establishments predominantly operated on a time share basis) which are operated by owners or managers who have sole letting rights to at least five flats, units or houses or by real estate agents for short-term letting. They are mainly self-contained in terms of cooking, bath (or shower) and toilet facilities and do not have breakfast available for guests. Data for holiday flats, units and houses include short-term owner occupation as well as paying guest occupation.

Visitor hostels which provide accommodation to visitors on a bed basis (rather than by the room). This category does not include establishments providing charity type accommodation (e.g. Salvation Army hostels) nor hotels, motels and guest houses without in-room facilities which provide accommodation on a per room basis.

- *Caravan parks* which provide either predominantly short-term (i.e. for periods of less than 2 months) or predominantly long-term (i.e. for periods of 2 months or more) accommodation to the general public and which provide powered sites for caravans and toilet, shower and laundry facilities for guests.

3 Data collected and published for each type of establishment (other than holiday flats, units and houses) include both long-term and short-term guests at these establishments.

4 Establishments which provide more than one type of accommodation (e.g. a motel with attached caravan park) are treated as two or more separate establishments. However, self-contained units, flats, cabins, etc. attached to hotels, motels or to caravan parks are included in the capacity for those establishments and not treated as separate holiday flat, unit or house establishments.

DEFINITIONS

5 *Number of establishments.* For hotels, motels and guest houses, caravan parks and visitor hostels, the number of establishments within the scope of the survey which operated for any part of the survey period, or which closed temporarily for the quarter for seasonal reasons.

6 *Number of letting entities.* For holiday flats, units and houses, the number of owners, managers or real estate agents within the scope of the survey who operated for any part of the survey period.

7 Capacity in terms of *Guest rooms, Bed spaces, Holiday units* or *Caravan park sites, etc.* is the maximum number available to accommodate paying guests during the survey period. Capacity closed temporarily for seasonal reasons is included.

8 *Bed spaces.* Three-quarter beds are counted as one bed space; double beds as two bed spaces. Cots are excluded.

EXPLANATORY NOTES —continued

DEFINITIONS —continued

9 *Total caravan park capacity* comprises *On-site vans, Other powered sites, Unpowered sites and Cabins, etc.*

10 *Room nights available.* The number of guest rooms available multiplied by the number of days for which they were available during the survey period. Includes operating periods only for establishments closing (other than for seasonal reasons) or opening during the survey period.

11 Occupancy in terms of *Room nights, Unit nights* or *Site nights occupied* refers to the total number of nights each guest room, holiday unit or caravan park site, etc. was occupied during the survey period.

NOTE: From September quarter 1992, caravan park sites, etc. permanently reserved for 2 months or more at the end of the survey period but only casually occupied by their tenants have been recorded continuously as *Site nights occupied* irrespective of whether the tenants of individual sites were in residence on any particular night. (See also paragraph 14 below). Previously, usage of these sites was recorded as *Site nights occupied* only when their tenants were in the park. Total site occupancy rates from September quarter 1992 are therefore not comparable with those from previous quarters.

12 Occupancy in terms of *Guest nights* refers to the total number of nights each paying guest stayed during the survey period.

13 *Sites occupied by long-term guests.* The total number of sites, etc. occupied at the end of the survey period by guests who have stayed continuously for 2 months or more.

14 *Other sites permanently reserved.* The total number of powered and unpowered sites, on-site vans and cabins, etc. continuously let for 2 months or more by the end of the survey period to tenants who occupy the sites only on a casual or sporadic basis. Separate data for this item are available only from September quarter 1992.

15 *Occupancy rates* represent occupancy expressed as a percentage of total capacity available during the survey period – e.g.

$$\text{Room occupancy rate (\%)} \text{ for the period} = \frac{\text{Room nights occupied}}{(\text{Guest rooms}) \times (\text{No. of days in the period})} \times 100$$

providing that, for establishments closing (other than for seasonal reasons) or opening during the survey period, the denominator of the above expression includes only operating periods.

16 *Guest arrivals.* The total number of paying guests counted only on the first night they stayed at the accommodation establishment.

17 *Unit lettings.* The total number of times a holiday flat, unit or house was occupied by a new tenant, counted only on the first night it was occupied by the new tenant.

18 *Average length of stay* is expressed in number of days and calculated:

- for hotels, motels and guest houses and for visitor hostels, by dividing *Guest nights* by *Guest arrivals* and
- for holiday flats, units and houses, by dividing *Unit nights occupied* by *Unit lettings*.

19 *Takings from accommodation.* Revenue received from the provision of accommodation. Takings from meals are excluded. Takings from accommodation for each month generally represent the takings received during that month. Where payments are received in advance of, or after, the provision of accommodation to guests, the monthly figure for takings from accommodation may not necessarily bear a direct relationship to the number of guests accommodated during the month. Rental and storage fees paid to caravan parks for the keeping of private vans in parks are included in the takings of the month they are received.

EXPLANATORY NOTES —continued

DEFINITIONS —continued

20 *Star grading.* The grading of hotels and motels with facilities based on the classification system used by members of the Australian Automobile Association (AAA). The gradings are allocated according to a points system based on the amenities and facilities available to guests. Details of the grading scheme are contained in the RACV-RAASA members' publication *Accommodation Australia*, or the individual tour guides produced by members of the AAA. For the purpose of classifying establishments to a star grading in this publication, 'half' star gradings are ignored (e.g. a two and a half star grading has been shown as two star).

21 *Employment.* The number of persons working at accommodation establishments at the end of the survey period (including working proprietors and those working on other than accommodation activities).

UNPUBLISHED STATISTICS

22 The ABS may make available on request certain unpublished tourist accommodation statistics. A charge may be made for this information.

RELATED PUBLICATIONS

23 Publications for Australia, and each State and Territory, are released by the respective offices of the ABS. Tourist accommodation statistics for past quarters are available on request. Other ABS publications which may be of interest include:

Directory of Tourism Statistics, 1991 (1130.0) (irregular)

Overseas Arrivals and Departures, Australia (3401.0) (monthly)

Tourism Indicators Australia (8634.0) (quarterly)

Selected Accommodation Establishments, Australia, 1984-85 (8636.0) (irregular)

Tourist Accommodation Atlas of Queensland, 1991 (8645.3) (irregular)

24 Current publications produced by the ABS are listed in the *Catalogue of Publications and Products, (1101.0)*. The ABS also issues the *Publications Advice (1105.0)* on Tuesdays and Fridays which lists publications to be released in the next few days. Both the *Catalogue* and *Publications Advice* are available from any ABS office.

SYMBOLS AND OTHER USAGES

n.a. not available

n.p. not available for publication but included in totals where applicable

r figure or series revised since previous issue

.. not applicable

— nil or rounded to zero

25 Where figures have been rounded, discrepancies may occur between totals and the sums of the component items.

ELECTRONIC SERVICES

DISCOVERY. The ABS intends discontinuing its statistical information service on DISCOVERY. Please contact Peter Davidson (Phone 06 252 6684) to discuss possible alternatives for acquiring statistics or if you wish to comment on this proposal.

PC-AUSSTATS. Thousands of up-to-date time series are available on this ABS on-line service. For further information, phone the PC-AUSSTATS Help Desk on (06) 252 6017.

TELESTATS. This service provides:

- foreign trade statistics tailored to users' requirements. Further information is available on (06) 252 5404
- text and tables for selected Main Economic Indicator publications. Further information is available on (06) 252 5405.

FLOPPY DISK SERVICE

Selected ABS statistics are available on floppy disk. Further information is available on (06) 252 6684.

IAN CASTLES
Australian Statistician



For more information ...

The ABS publishes a wide range of statistics and other information on Australia's economic and social conditions. Details of what is available in various publications and other products can be found in the *ABS Catalogue of Publications and Products* available at all ABS Offices (see below for contact details).

Information Consultancy Service

Information tailored to special needs of clients can be obtained from the Information Consultancy Service available at ABS Offices (see Information Inquiries below for contact details).

National Dial-a-Statistic Line

0055 86 400

(Steadycom P/L premium rate 25c/21 4 secs.)

This number gives 24-hour access, 365 days a year for a range of statistics.

Electronic Data Services

A large range of data is available via on-line services, diskette, magnetic tape, tape cartridge and CD ROM. For more details about our electronic data services, contact any ABS Office (see below).

Bookshops and Subscriptions

There are over 400 titles of various publications available from ABS bookshops in all ABS Offices (see below Bookshop Sales for contact details). The ABS also provides a subscription service through which nominated publications are provided by mail on a regular basis at no additional cost (telephone Publications Subscription Service toll free on 008 02 0608 Australia wide).

Sales and Inquiries

Regional Offices	Information Inquiries	Bookshop Sales
SYDNEY (02)	268 4611	268 4620
MELBOURNE (03)	615 7000	615 7829
BRISBANE (07)	222 6351	222 6350
PERTH (09)	360 5140	360 5307
ADELAIDE (08)	237 7100	237 7582
HOBART (002)	20 5800	20 5800
CANBERRA (06)	207 0326	207 0326
DARWIN (089)	43 2111	43 2111
National Office		
ACT (06)	252 6007	008 020 608

ABS Email Addresses

Keylink	STAT.INFO/ABS
X.400	(C:AU,A:TELMEMO,O:ABS,SN:INFO,FN:STAT)
Internet	STAT.INFO@ABS. TELEMEMO.AU



Information Services, ABS, PO Box 10, Belconnen ACT 2616

